

Eaton Row Belgravia SW1



This spacious four bedroom townhouse built circa 1960 is situated in a quiet and private mews at the eastern end of Eaton Square.

Providing accommodation of 1,645 sq ft (152.8 sq m), the house itself has the benefit of an integral garage, a well proportioned kitchen/dining room to the rear, four bedrooms and a roof terrace on the upper floor.

Accommodation

- Reception room
- Kitchen/dining room
- Master bedroom with en suite bathroom
- 2 Further bedrooms
- Study/bedroom 4
- Bathroom
- Garage
- Roof terrace
- Mews parking, subject to licence

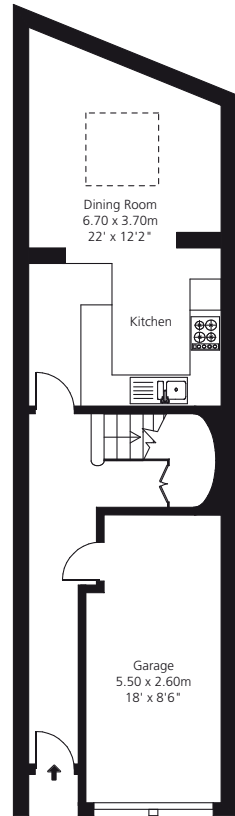
Local Authority

City of Westminster

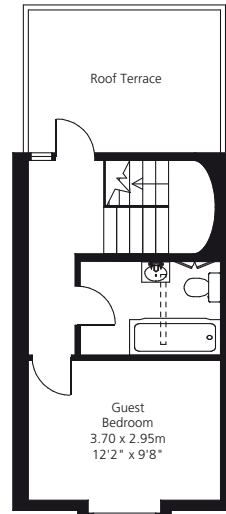
Terms

Freehold

Offers in excess of £2,500,000 (stc)



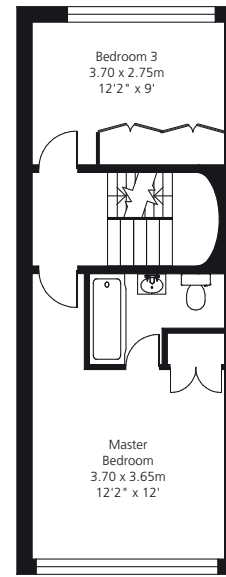
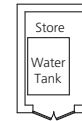
Ground Floor



Third Floor



First Floor

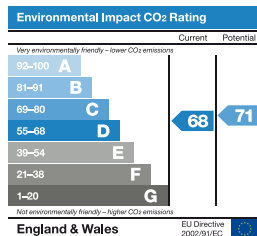
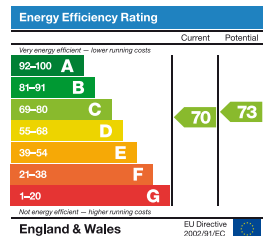


Second Floor

Approximate Gross Internal Area

1,645 square feet / 152.8 square metres (including garage)

Plus store
22 square feet / 2 square metres



While we endeavour to make our sale details accurate and reliable, if there is any point which is of particular importance to you, please contact the office as we will be pleased to check the information for you, particularly if contemplating travelling some distance to view the property. AYRTON WYLIE LTD AND ALEX STROUD GIVE NOTICE TO ANYONE READING THESE PARTICULARS THAT: i) The particulars do not constitute any part of an offer or contract. ii) All statements contained in these particulars as to this property are made without responsibility on the part of Ayrton Wylie Ltd or Alex Stroud or the vendors or lessors. iii) None of the statements contained in these particulars as to this property are to be relied upon as statements or representations of fact. iv) Any intending purchasers must satisfy themselves by inspection or otherwise to the correctness of each of the statements contained in these particulars. v) The vendors do not make or give and neither Ayrton Wylie Ltd or Alex Stroud nor any person in their employment has any authority to make or give any representation or warranty whatever in relation to this property. January 2012. CGP10863-FL04M. Photography and brochure by cgpdesign.com 020 7222 7222

ALEX STROUD
PROPERTY CONSULTANTS LIMITED

14 Basil Street • London • SW3 1AJ
Mobile: 07584 038 000
Email: alex@alexstroud.com • www.alexstroud.com

Ayrton Wylie

sales@ayrtonwylie.com
www.ayrtonwylie.com

+44 (0) 20 7730 4628